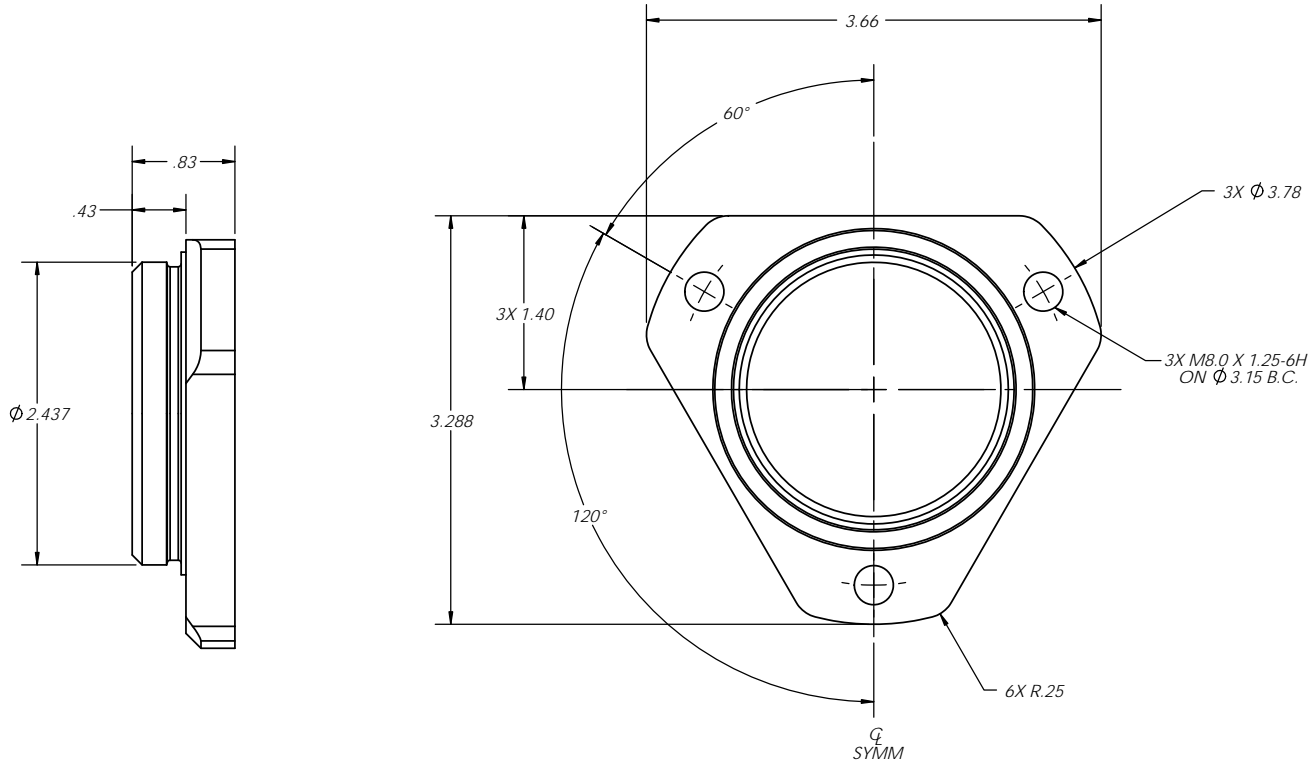


REVISIONS					
REV.	ECO	DATE	DESCRIPTION	AUTH	DR.



NOTES:

- MATERIAL: C12L14 STEEL, ZINC PLATED
- 1. DIMENSIONS ARE FOR REFERENCE ONLY.

		HOTSTART, INC. SPOKANE, WA. PROPRIETARY INFORMATION <small>This drawing and the information shown on it are property of Hotstart, Inc. and are for the sole purpose of doing business with us. Any copying or transmittal to others of this information is strictly prohibited without prior written consent Hotstart.</small>	
		FLANGE, 2.4370 DIA 3 HOLE PLATED	
APPROVALS	DATE	UNLESS OTHERWISE SPECIFIED DIMENSIONS ARE IN INCHES (mm)	DWG. NO.
DRAWN BY YP	11-07-13		A-4525-6S
APPROVED BY SSO	11-07-13	TOLERANCES	SIZE ORIGIN
		XX ± N/A ANGULAR ± N/A°	B
THIRD ANGLE PROJECTION		XXX ± N/A DO NOT SCALE DRAWING	SCALE 1:1 SHEET 1 OF 1 REV 00

PART NUMBER	FLANGE, 2.4370 DIA 3 HOLE PLATED	TEHNES
	DESCRIPTION	CUSTOMER